



CEO'S MESSAGE

Year Round Tree Trimming and Maintenance Program

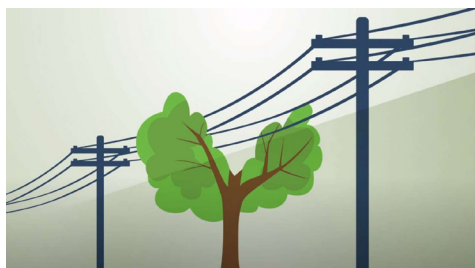
Kit Carson Electric Co-op, Inc. conducts tree trimming maintenance along the right-of-way of distribution lines to provide safe and reliable electric service. KCEC tries to control tree growth on primary and secondary power lines at an early stage of development before they interfere with the electrical service. Keeping the trees trimmed will decrease outages due to natural growth interference.

Trees are a leading cause of power outages, especially when the wind blows. KCEC performs routine maintenance of trees and other vegetation on over 2,900 miles of rights-of-way. These routine vegetation management activities are essential to maintain reliable electric service to our members and to provide for the safety of your family and the general public.

Also, keeping our right-of-way cleared helps mitigate fire danger, especially during this year's projected drought conditions. The cooperative regrets the need to cut trees; we hope that members understand the importance and agree that safety is the primary concern.

KCEC has dedicated crews that perform year-round maintenance and tree trimming throughout our service territory. KCEC crews check equipment on electric poles, substations and distribution electric lines. KCEC inspects and patrols its electric lines and poles daily to ensure the reliability of electricity to our members.

Don't hesitate to contact KCEC offices before attempting to cut trees close to power lines. We will cut trees safely and professionally. Please contact us at (575) 758-2258 for more information.



Kit Carson Internet Now Offering New Installation Incentives

Kit Carson Internet (KCI) now offers a wider range of broadband installation incentives to fit your budget. KCI encourages you to call for speeds, prices and discounts available.

Today's fast-paced and exciting world requires that individuals, families and businesses be able to communicate rapidly in ways never dreamed possible. KCI offers speeds ranging from 50 Mbps to 1 Gb. Computers and the Internet have become irreplaceable tools for personal correspondence, student research and a vast array of business applications. Contact KCI today for a free estimate! We offer the fastest speeds for the most affordable prices

If you have any questions, please feel free to call us at (575)-758-4838. We appreciate your business. Make sure to visit us at kitcarson.com for pricing and plan features.

Plans & Pricing Residential
Turquoise 50 Mbps - \$49.90
Silver 100 Mbps - \$59.90
Gold 150 Mbps - \$109.90
Diamond 250 Mbps - \$152.90

Plans & Pricing Business
Turquoise 50 Mbps - \$83.90
Silver 100 Mbps - \$103.90
Gold 150 Mbps - \$143.90
Diamond 250 Mbps - \$173.90





KEEPING THE HEAT ON!

For the Month of February, Kit Carson Propane is offering \$2.85 per gallon for Residential and Bottle Dock Customers.

PRICES ARE SUBJECT TO CHANGE AT ANY TIME WITH OR WITHOUT NOTICE!!!

We are also offering paperless services through our online portal!

Registration is quick and simple! Learn more at www.kitcarson.com

Please call the office at 20% to avoid running out of fuel. We only fill to 80% of the tank capacity. Please keep driveways, and area under tanks clear and free from debris.

Entering the colder season please allow our drivers 7 – 10 business days to ensure the safety of you as our customers and our hard-working drivers.

- **EMERGENCY FEE FOR OUT OF GAS CALLS ARE \$125 LOCAL AND \$150 OUT OF TAOS COUNTY**
- **\$2.09 PER GALLON FOR NEW CUSTOMERS**
- **TANK SETS & GAS CHECKS ARE FREE OF CHARGE WITHOUT NECESSARY UPGRADES FOR NEW CUSTOMER**
- **\$95 RELIGHTING FEE ON ROUTE DAY**
- **\$125 RELIGHTING FEE NOT ON A ROUTE DAY IN TAOS COUNTY**
- **\$150 RELIGHTING FEE NOT ON A ROUTE OUT OF TAOS COUNTY**

Extended unplanned power outages may impact the entire community and the economy. An unplanned power outage is when the electrical power goes out unexpectedly.

Here are some power outage tips:

- Use a generator, but **ONLY** outdoors and away from windows.
- Do not use a gas stove or oven to heat your home.
- Disconnect appliances and electronics to avoid damage from electrical surges.
- Have alternate plans for refrigerating medicines or using power-dependent medical devices.
- Keep freezers and refrigerators closed.
- Check with local officials about heating and cooling locations open near you.
- Check on neighbors
- Make sure you have flashlights and batteries.
- Check toiletry/essentials supplies.
- Get an Emergency Kit

Outage Information



KCEC has a new outage information text-messaging alert system. To enroll, please text “kcec” to 85700. Members can also call our offices at 575-751-9064 to update their information on their account. If you have medical devices that need electricity, please contact KCEC. Thank you

Please Enroll Now!

Unplanned power outages are often caused by freezing rain, sleet storms and/or high winds which damage power lines and equipment. For more information, please contact KCEC offices.

Board of Trustees

Bobby Ortega	President	Questa	District 2
Cristobal Duran	Vice President	Rodarte	District 4
Manuel Medina	Secretary	Taos	District 1
Bruce Jassman	Treasurer	Angel Fire	District 5
David Torres	Trustee	Arroyo Seco	District 1
Robert Bresnahan	Trustee	Valle Escondido	District 1
Luisa Valerio Mylet	Trustee	Pot Creek	District 1
Bernie Torres	Trustee	Costilla	District 2
Arturo Rodarte	Trustee	Ojo Caliente	District 3
Russ Coyle	Trustee	Angel Fire	District 5
Michael Romero	Trustee	Vadito	District 4

Next Board of Trustee monthly Board meeting will be held February 22, 2022 at 9:00 am



Contact Us



MAIN OFFICE (575) 758-2258 or 1-800-688-6780

CUSTOMER SERVICE: (575) 751-9064 or 1-800-944-8159

CUSTOMER SERVICE FAX: (575) 758-4611

CUSTOMER SERVICE EMAIL: csr@kitcarson.com

ADMINISTRATION FAX: (575) 758-4890

AUTOMATED SYSTEM: (575) 751-8132

POWER OUTAGE/SERVICE INTERRUPTIONS: (575) 758-6100

EMERGENCY LINE-LOCATES: 1-800-321-2537

QUESTA OFFICE: (575) 586-2113 Closed until further notice.

KIT CARSON INTERNET: (575) 758-4838 or 1-800-758-4820

KIT CARSON PROPANE: (575) 758-7757

NEW MEXICO PUBLIC REGULATORY COMMISSION: 1-800-947-4722

* This institution is an equal opportunity provider and employer